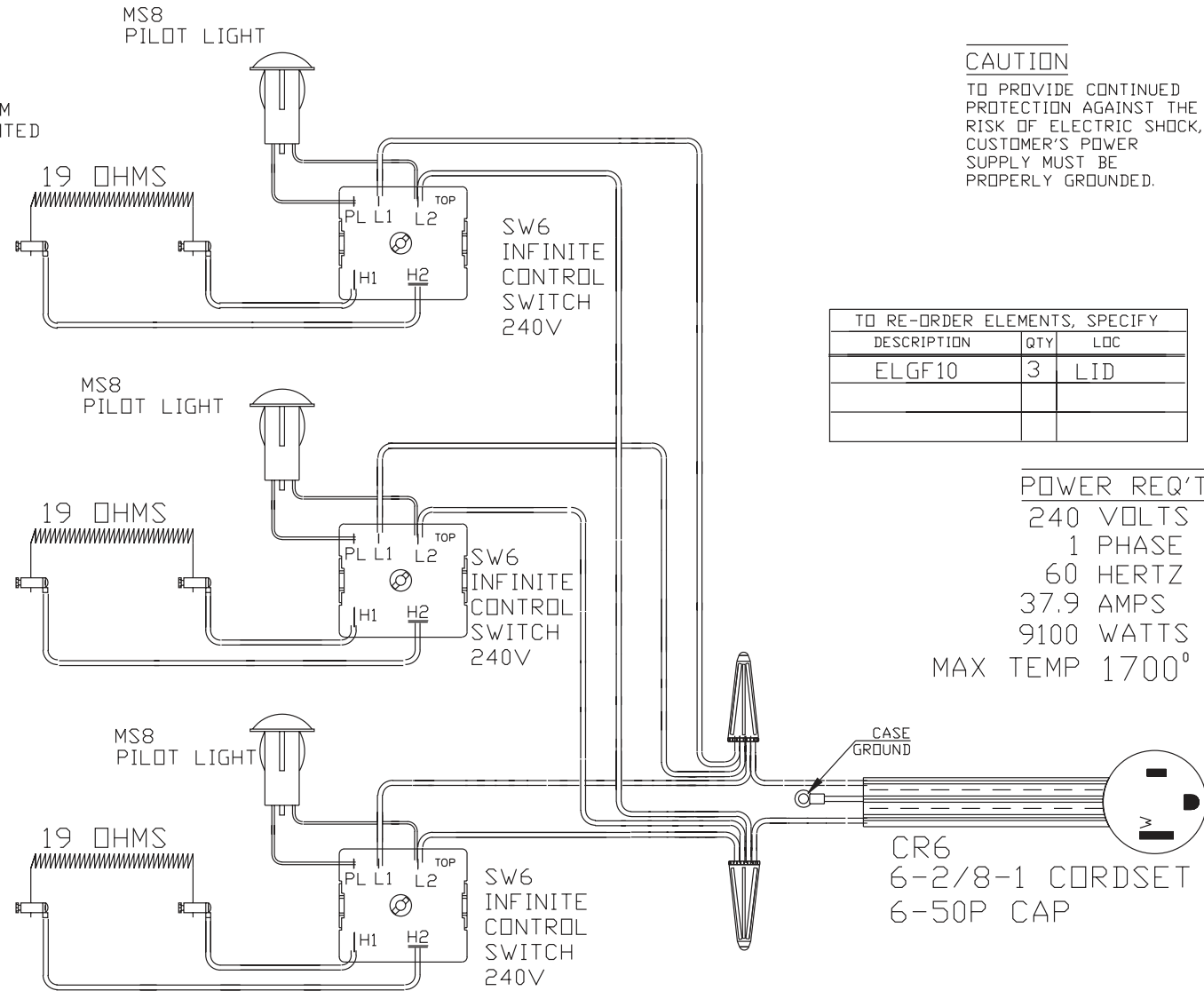


WIRING NOTE

ALL WIRES #14 AWG,
TYPE SEW/SF2 MINIMUM
UNLESS OTHERWISE NOTED

CAUTION

TO PROVIDE CONTINUED
PROTECTION AGAINST THE
RISK OF ELECTRIC SHOCK,
CUSTOMER'S POWER
SUPPLY MUST BE
PROPERLY GROUNDING.



TO RE-ORDER ELEMENTS, SPECIFY

DESCRIPTION	QTY	LDC
ELGF10	3	LID

POWER REQ'TS

240 VOLTS
1 PHASE
60 HERTZ
37.9 AMPS
9100 WATTS
MAX TEMP 1700° F

COMMENTS

PARAGON INDUSTRIES
2011 SOUTH TOWN EAST BLVD
MESQUITE, TEXAS 75149

PRODUCT DESCRIPTION
10 SIDES, 23.5" DIA, 9" DP
240V, 1PH, 60HZ, 38A, 9100W

PART NO. GF10B
WIRING DIAGRAM

REV
-