

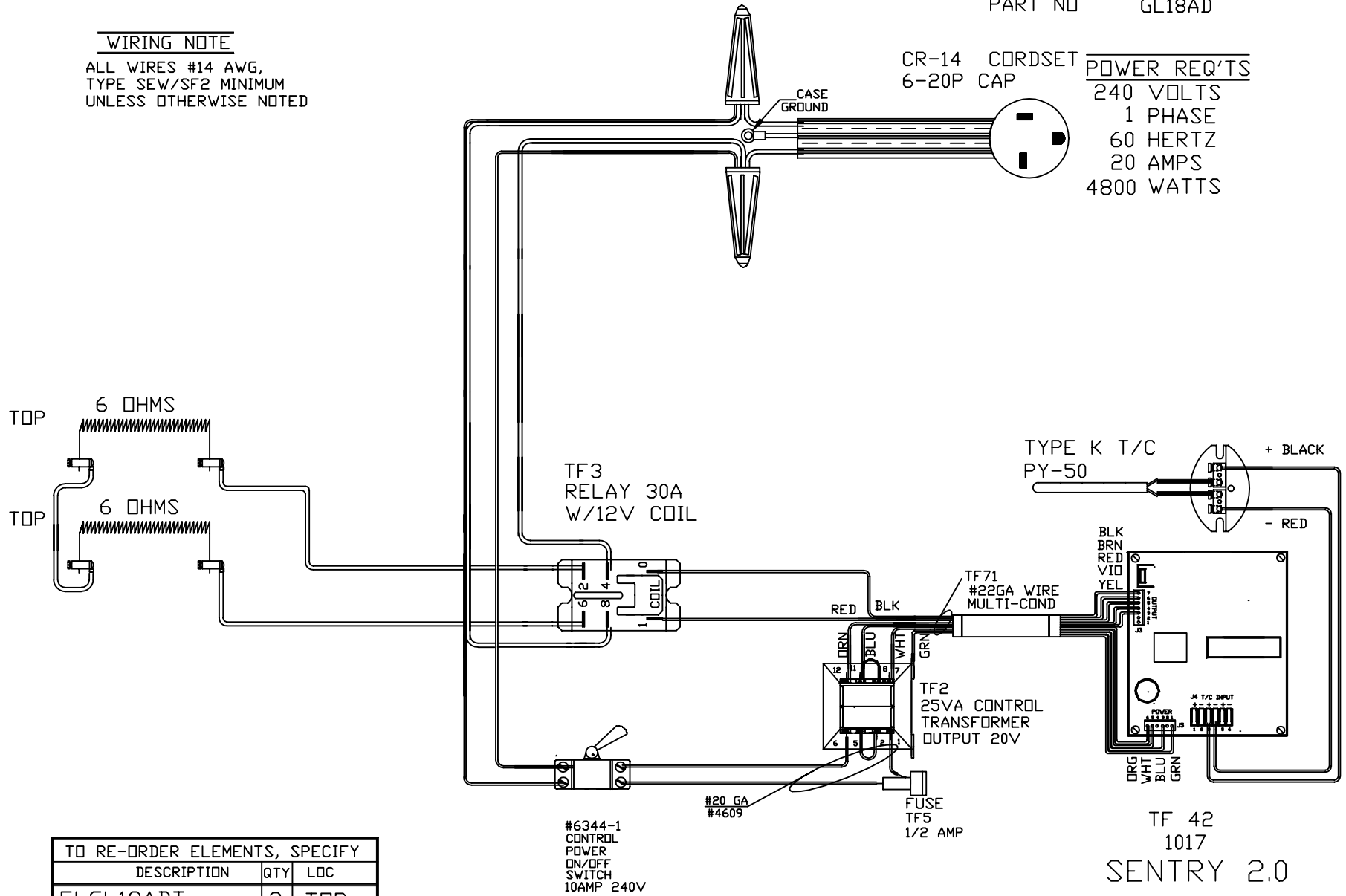
PART NO GL18AD

WIRING NOTE

ALL WIRES #14 AWG,
TYPE SEW/SF2 MINIMUM
UNLESS OTHERWISE NOTED

CR-14 CORDSET
6-20P CAP

POWER REQ'TS
240 VOLTS
1 PHASE
60 HERTZ
20 AMPS
4800 WATTS



TO RE-ORDER ELEMENTS, SPECIFY

DESCRIPTION	QTY	LOC
ELGL18ADT	2	TOP

#6344-1
CONTROL
POWER
ON/OFF
SWITCH
10AMP 240V

#20 GA
#4609

FUSE
TF5
1/2 AMP

TF 42
1017
SENTRY 2.0

N/C
PAINTED
STEEL CASE
1700°F

REV	DATE	BY	DESCRIPTION
-	2/13/01	DTB	

SWITCH BOX ASSY-
PARAGON INDUSTRIES
2011 SOUTH TOWN EAST BLVD
MESQUITE, TEXAS 75149

WIRING DIAGRAM
240 V1 PHASE ,60 HZ 4800 WATTS

PART NO.	REV
GL18AD	-
GL18AD	FILE